

## Limited Liability

These warranties replace all other warranties, expressed or implied including, but not limited to, the implied warranties of merchantability and fitness for a particular purpose.

Thermaltake disclaims all other warranties, expressed or implied including, without limitation, implied warranties of merchantability and fitness for a particular purpose.

Some jurisdictions do not allow the exclusion of implied warranties so this limitation may not apply to you. All expressed and implied warranties are limited in duration to the limited warranty period. No warranties apply after that period, some jurisdiction do not allow limitation on how long an implied warranty lasts, so this limitation may not apply to you.

Limitations of liability, Thermaltake's responsibility under this, or any other warranty, implied or expressed, are limited to repair or replacement, as set forth above. These remedies are the sole and exclusive remedies for any breach of warranty. Thermaltake is not responsible for direct, special, incidental, or consequential damages resulting from any breach of warranty or under any other legal theory including, but not limited to, lost profits, downtime, goodwill, damage to or replacement of equipment and property, and any cost of recovering, reprogramming, or reproducing any program or data stored in or used with a system containing Thermaltake product. Some jurisdictions do not allow the exclusion or limitation of incidental or exclusions may not apply to you.

Extent of limited warranty, Thermaltake does not warrant that your product will be free from design defects or errors known as "ERRATA". Current characterized errata are available upon request. This limited warranty does not cover any costs relating to removal or replacement of any part that is soldered or otherwise affixed to your system's motherboard. This limited warranty does not cover damages due to external causes, including accidental, problems with electrical power, usage not in accordance with product instructions, misuse, neglect, alteration, repair, improper installation, or improper testing. Nor is Thermaltake held liable for any bodily damage that may result during the installation, maintenance, repair, or is otherwise associated with this product, Thermaltake is free from any legal actions that may result in death, pain and anguish, or any other form of personal damage that may occur by purchasing this product.

You, the buyer, agree to this warranty and its term set within its expressed and implied limited warranty. This limited warranty gives you specific legal rights, and you may also have other right that varies from jurisdiction to jurisdiction.

## CAUTION

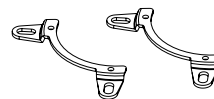
Before installing Thermaltake Bigwater A80 Liquid Cooling System, we strongly suggest you to read the manual thoroughly and make sure all components are included in the package. Please do follow the installation guide step-by-step.

Improper installation may cause serious damage to the system as well as to the water cooling unit. Thermaltake will not responsible for any damages due to incorrect installation and incorrect usage of this product.

## Specification

Compatibility (CPU Socket)	Intel LGA 2011/1366/1155/1156/775 AMD FM1/AM3+/AM3/AM2+/AM2	
Water Block	Material	Copper (Base)
Pump	Dimension	77 x 77 x 56 mm
	Bearing	Ceramic bearing
	Motor speed	1750~3000 RPM
	Rated Voltage	DC 12V
	Rated Current	DC 0.45 A (max)
Fan	Input Current	0.5 A
	Dimension	120 x 120 x 25 mm
	Speed	1200~2500 RPM
	Noise Level	20~43 dBA
	Rated Voltage	12 V
	Connector	3 pin
	Max. Air Flow	101.6 CFM
Radiator	Power Input	6 W
	Dimension	156 x 120 x 32.5 mm
Tube	Material	Aluminum
	Dimension	Ø 8.1
Weight	Material	FEP
		800 g

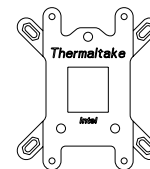
## Components



**A** Mounting clip  
Intel 1366/1156/775 x 2



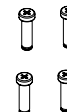
**B** Mounting clip  
AMD FM1/AM3+/AM3/  
AM2+/AM2 x 2



**C** Back Plate Intel/AMD  
x1



**D** Screw x 4 (for Intel & AMD  
Mounting clips)



**E** Screw x 4  
Intel 1366/1156/1155/775  
AMD FM1/AM3+/AM3/AM2+/AM2



**F** Screw x 4  
Intel 2011



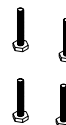
**G** Retention spring x 4



**H** Rubber ring x 4



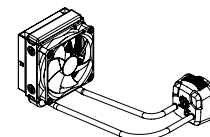
**I** Plastic spacer x 4



**J** Post x 4



**K** Screw x 4 (for radiator)



**L** Bigwater A80 unit x 1

## Installation steps

We strongly suggest the following installation procedures.  
Failure to comply may result in leaks and damaged components.

### Components Check



### Install Waterblock

Intel LGA 1366/1156/1155/775	P1.
Intel LGA 2011	P2.
AMD FM1/AM3+/AM3/AM2+/AM2	P3.



### Install Radiator

P4.



### Fan and Pump Connection

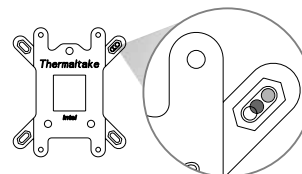
P4.



### Installation Complete

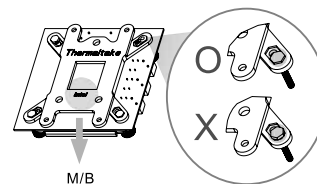
## Install Waterblock

### Intel LGA 1366/1156/1155/775 Installation



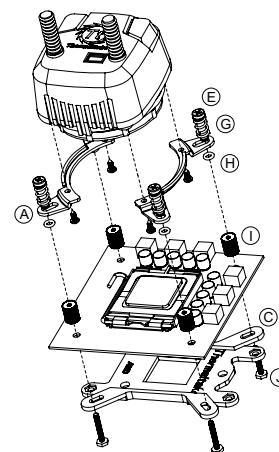
● 1366 ● 1566/1155 ○ 775

Before Installation, please verify the CPU platform and select the appropriate holes for your CPU socket.

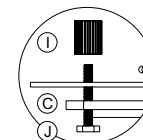


M/B

Exploded View

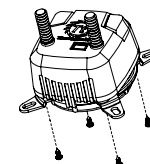


When you install an Intel CPU, please make sure that the back plate side facing away from the motherboard shows "INTEL".

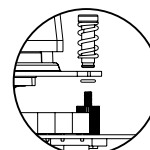


From beneath the motherboard, carefully attach the back plate(C) and insert the posts(J) through the motherboard mounting holes.  
Fasten the plastic spacers(I) over each post.

**\*\*Remove protective cover from waterblock before attaching on the CPU.**



Fasten the Intel mounting clips(A) on waterblock with screws(D).

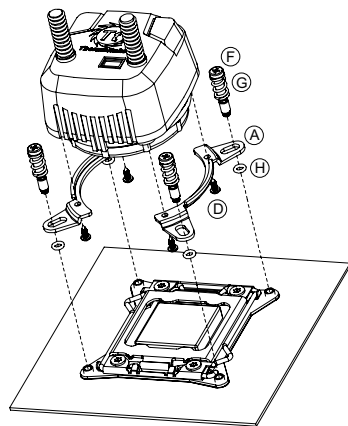


Assemble screws(E), retention springs(G) and mounting clips with rubber rings(H) together.  
Place the assembled waterblock onto the CPU and tighten it on each posts(J).

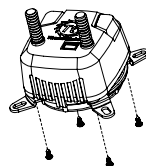
## Install Waterblock

### Intel LGA 2011 Installation

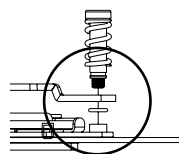
#### Exploded View



**\*\*Remove protective cover from waterblock before attaching on the CPU.**



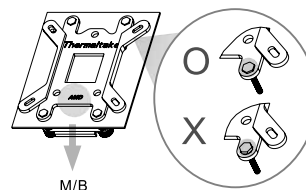
Fasten the Intel mounting clips(A) on waterblock with screws(D).



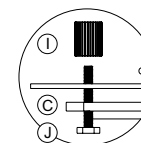
Assemble screws(F), retention springs(G) and mounting clips with rubber rings(H) together. Place the assembled waterblock onto the CPU and fasten it on motherboard.

## Install Waterblock

### AMD FM1/AM3+/AM3/AM2+/AM2 Installation

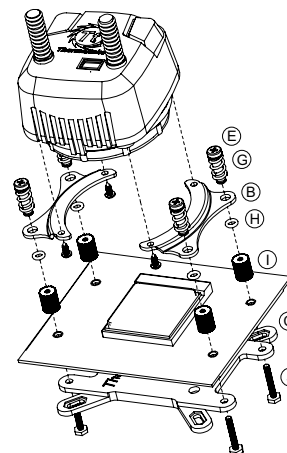


When you install an AMD CPU, please make sure that the back plate side facing away from the motherboard shows "AMD"

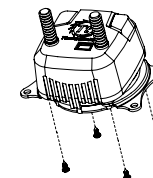


From beneath the motherboard, carefully attach the back plate(C) and insert the posts(J) through the motherboard mounting holes. Fasten the plastic spacers(I) over each post.

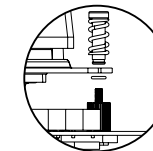
#### Exploded View



**\*\*Remove protective cover from waterblock before attaching on the CPU.**



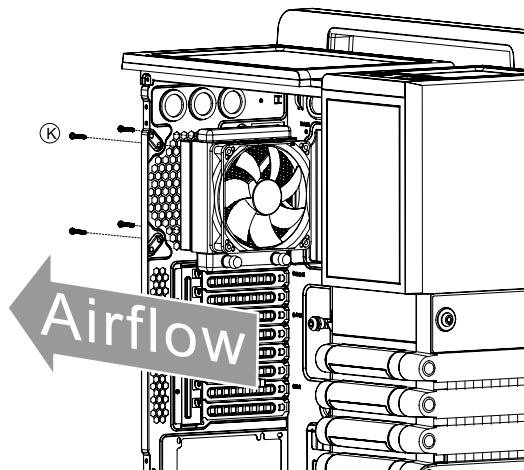
Fasten the AMD mounting clips(B) on waterblock with screws(D).



Assemble screws(E), retention springs(G) and mounting clips with rubber rings(H) together. Place the assembled waterblock onto the CPU and tighten it on each posts(J).

## Install Radiator

Mount radiator to fan housing and secure with screws (K).



## Fan and Pump Connection

Connect the fan and pump connectors to free headers on motherboard. Installation complete.

