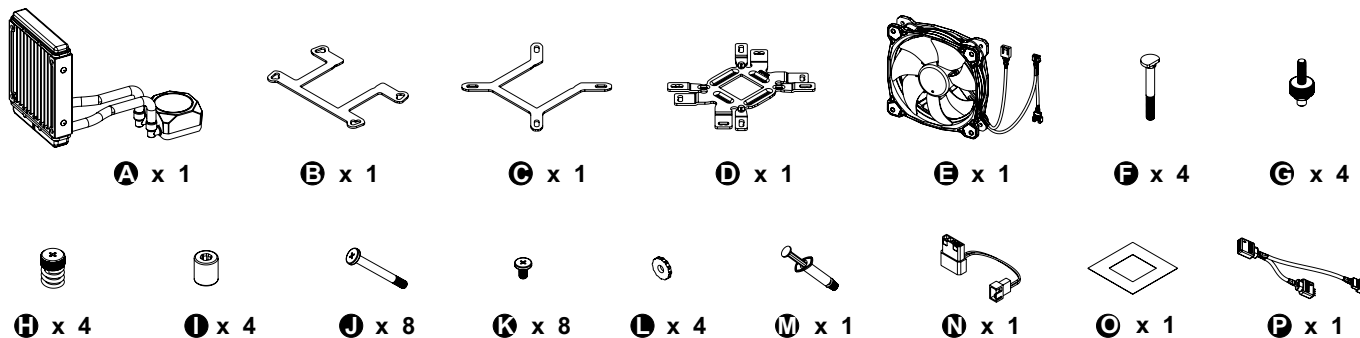
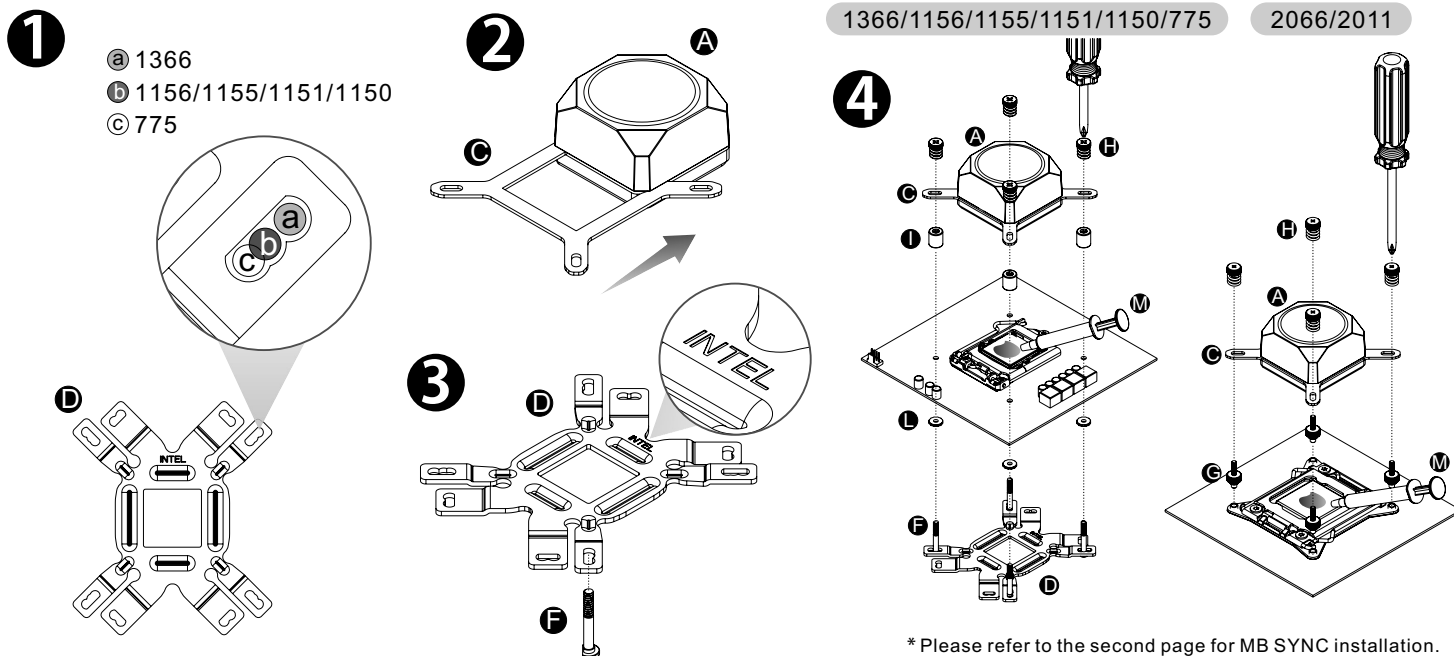


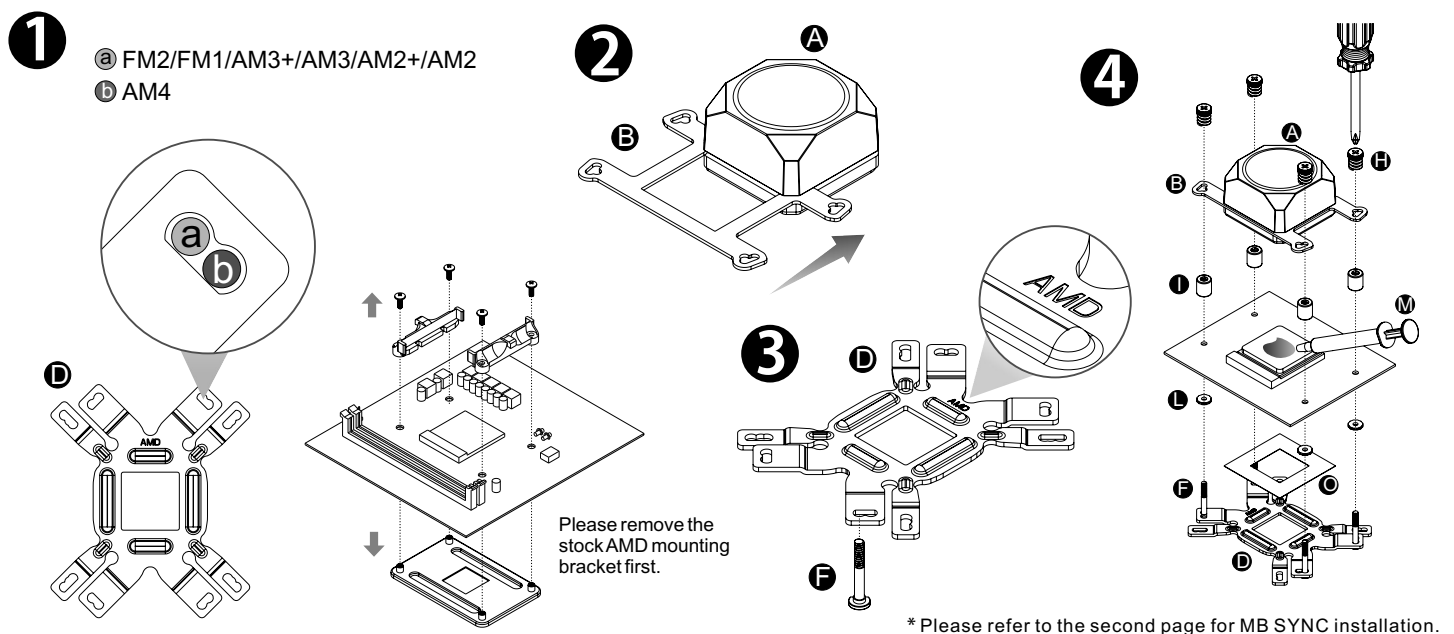
Parts List



Intel Installation Guide

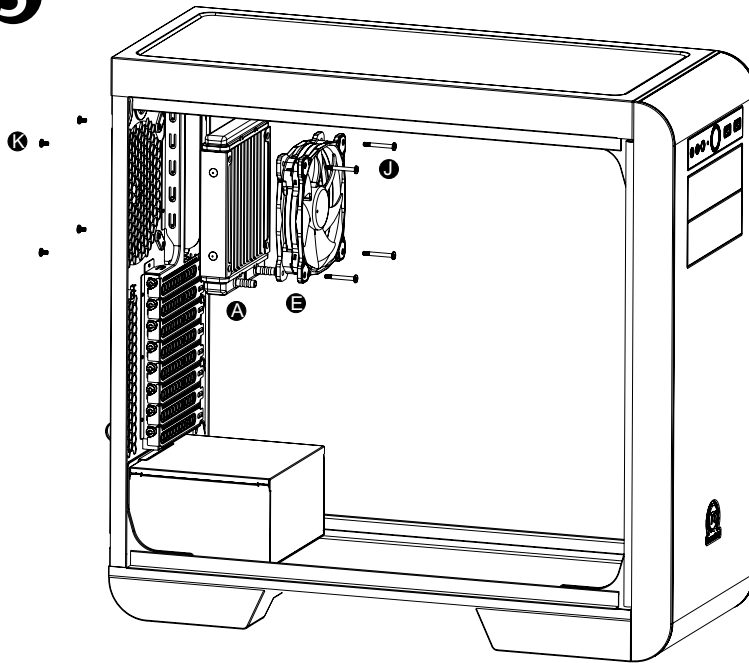


AMD Installation Guide



Installation Guide

5

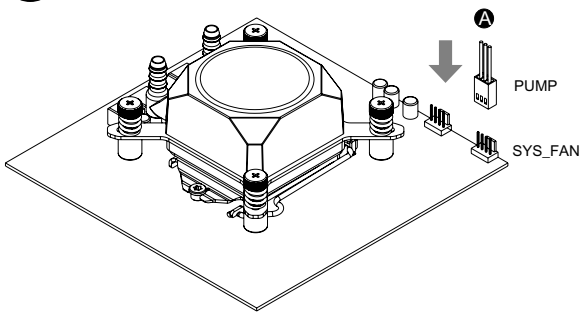


6

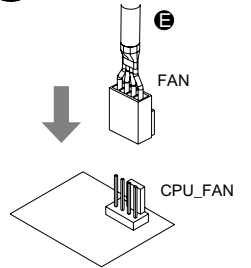
Intel

or

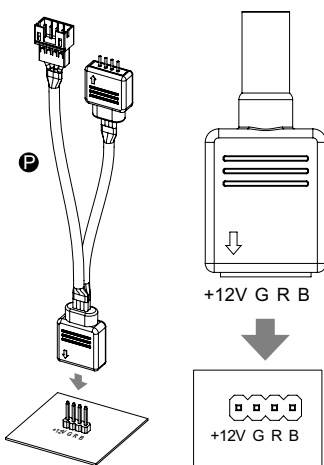
AMD



7



8



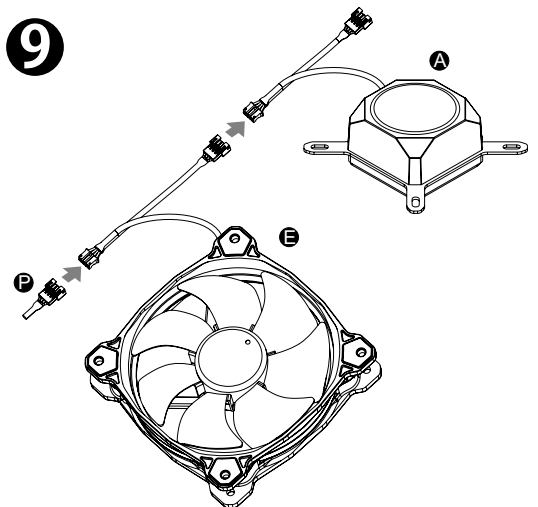
Connect the mainboard sync cable to mainboard.



CAUTION

Please power off the PC and check the Positive and Negative ends on the connector before connecting the cable to mainboard. Connecting the wrong end can damage the controller.

9



Connect the mainboard sync cable to fan, and connect the water block in series.