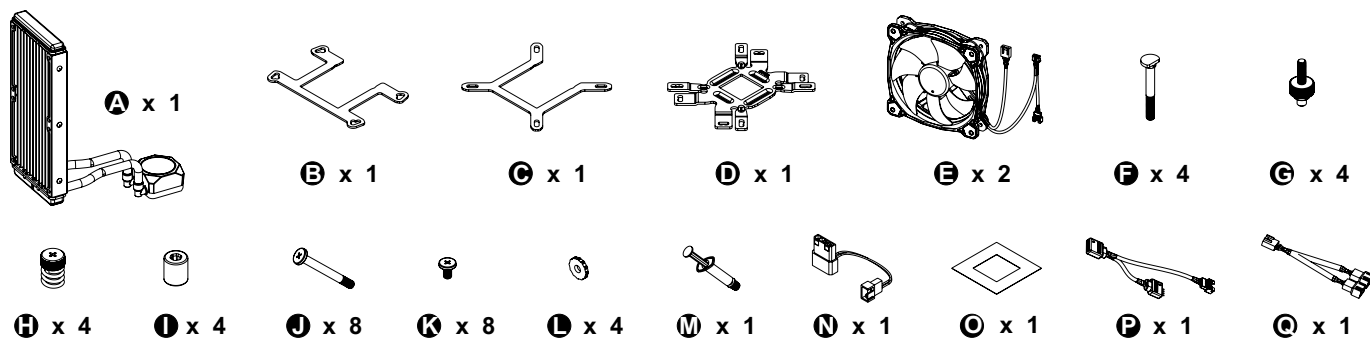
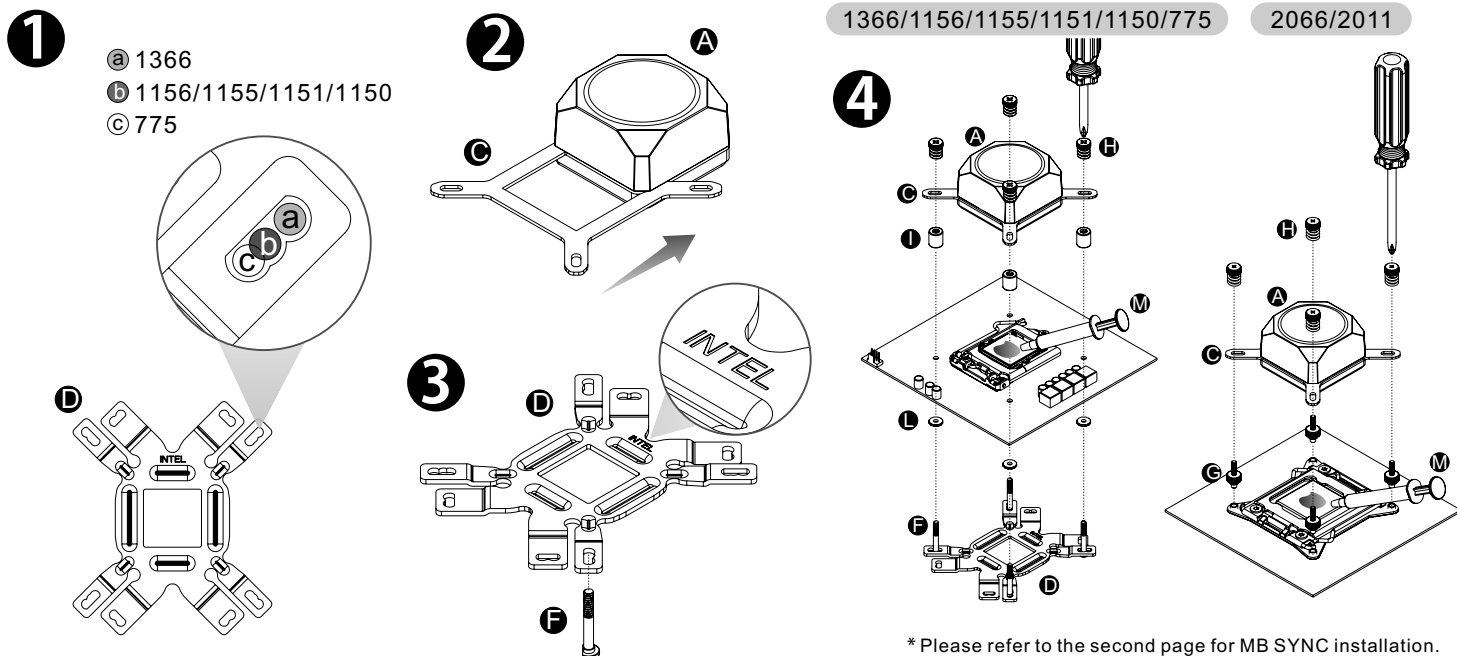


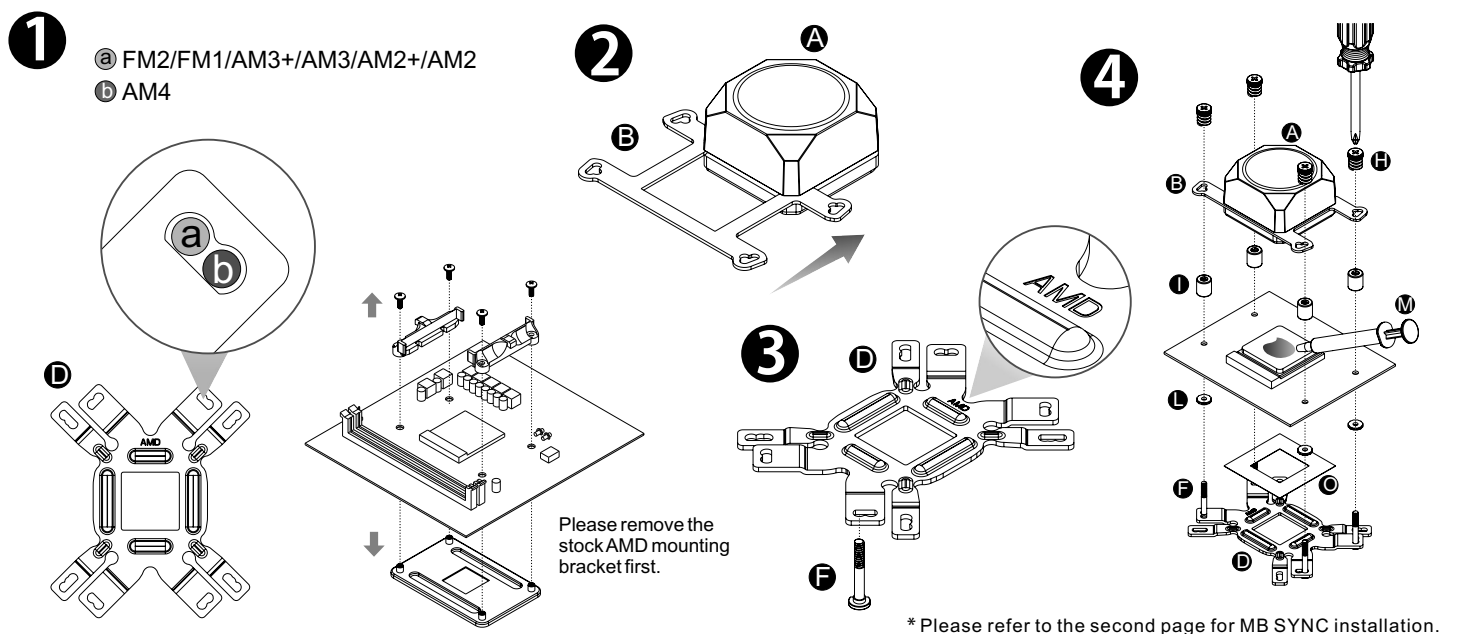
Parts List



Intel Installation Guide

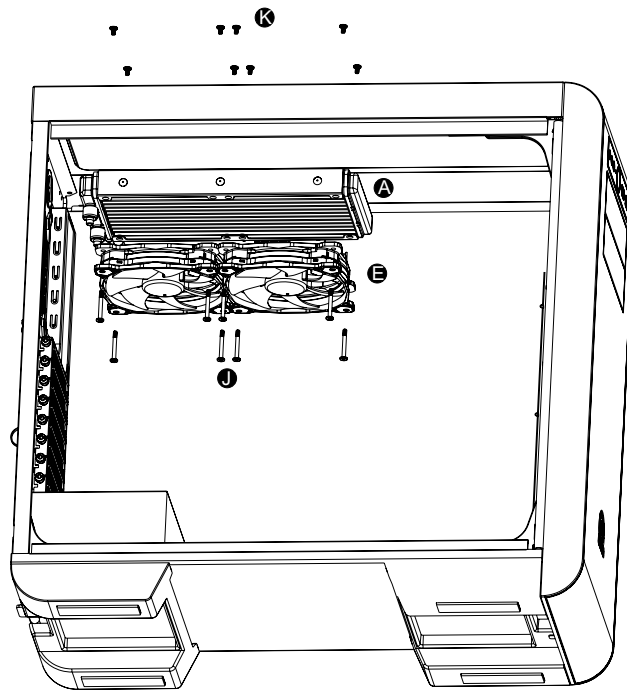


AMD Installation Guide



Installation Guide

5

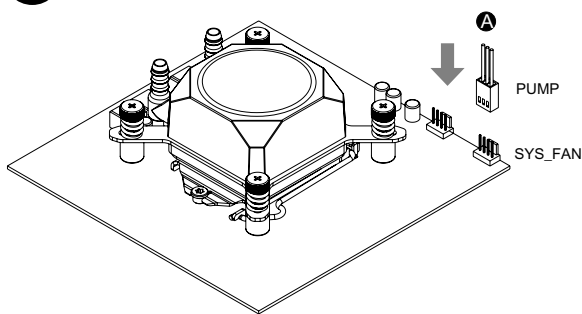


6

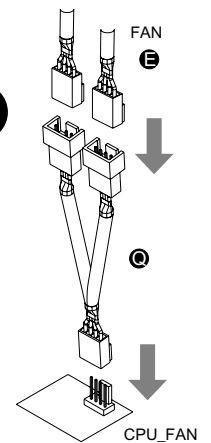
Intel

or

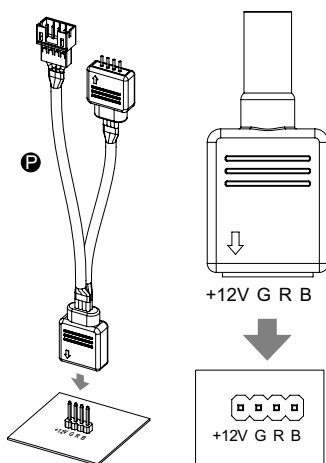
AMD



7



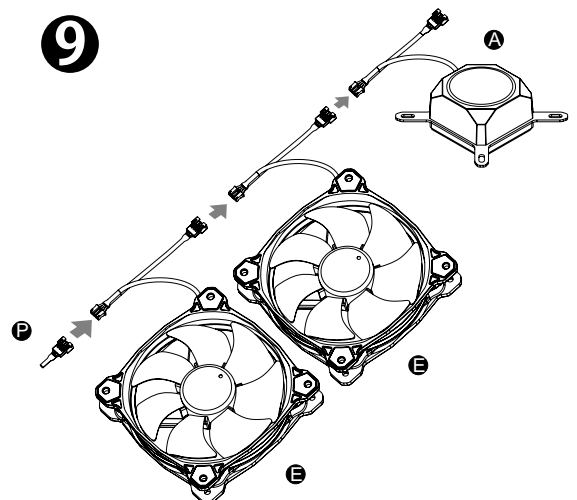
8



CAUTION

Please power off the PC and check the Positive and Negative ends on the connector before connecting the cable to mainboard. Connecting the wrong end can damage the controller.

9



Connect the mainboard sync cable to mainboard.

Connect the mainboard sync cable to fan, and connect the water block in series.